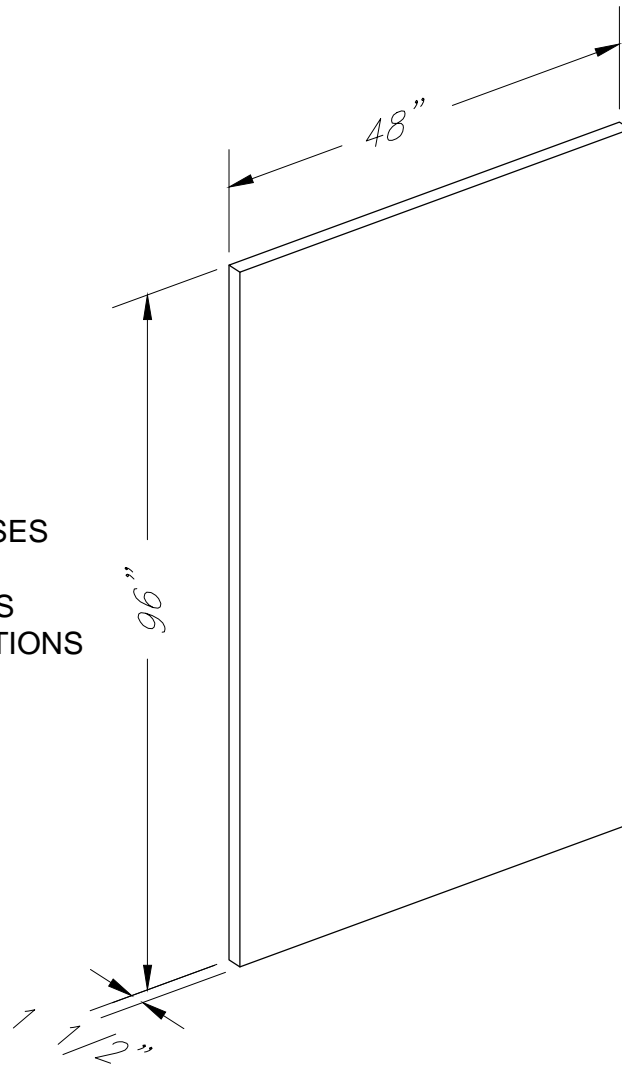


RAY-BAR BALLISTIC PANELS (RIFLE)

UL 752 LEVEL 8 / NIJ III (0108.01)



APPLICATIONS

- MILITARY
- RETAIL
- BANKS
- COURTHOUSES
- SCHOOLS
- SAFE ROOMS
- POLICE STATIONS

PHYSICAL PROPERTIES

- 1 7/16" THICK
- 16 POUNDS SQ. FOOT
- FIRE RESISTANT
- FLAT RIGID PANEL

ADVANTAGES

- AVAILABLE IN 1 TO 2 DAYS
- EASY TO INSTALL
- INSTALL OVER EXISTING WALLS

IMPORTANT NOTES

- ALL JOINTS REQUIRE 2" + OVERLAP
- 4" WIDE BALLISTIC BATTEN STRIP AT VERTICAL JOINTS
- ALL PENETRATIONS MUST BE BALLISTIC BACKED

PERFORMANCE STANDARDS

- UL 752 LEVEL 8 (RIFLE)
- NIJ III 0108.01 (RIFLE)
- RESISTANT RIFLE UP TO 7.62X51/308 WIN
- 5 SHOTS IN 12"X12" AREA
- 1 HOUR FIRE RESISTANT ASTM E119
- RESISTANT TO FORCED ENTRY

Terms of Use: Certain designs and concepts are the exclusive proprietary property and work product of Ray-Bar Engineering provided in good faith as a courtesy for the architectural design of projects specifying, incorporating and utilizing genuine Ray-Bar products and assemblies. Ray-Bar designs are not to be copied, altered, plagiarized or utilized in any competitive or detrimental manner against Ray-Bar as protected by law and/or copyrights. "All Rights Reserved"



JOB NAME:	
LOCATION:	
ROOM NUMBER:	
SHEET ____ OF ____:	

RAY-BAR BALLISTIC PANEL (RIFLE)

RAY-BAR ENGINEERING CORP.

Toll Free: 1(800) 444-XRAY / 1(800) 444-9729
 Telephone: (626) 969-1818
 24 Hour Fax: 1(800) 333-XRAY /
 1(800) 333-9729
 website: www.raybar.com

SCALE
 NTS

BRP-8